

User Guide



**For Adobe InDesign CS
and Adobe InDesign CS2**

User Agreement

By unpackaging this software and installing it on your computer, you are agreeing to the following terms and conditions:

This script, PopTabFmClip.js (for Adobe InDesign CS users) or PopTabFmClip.jsx (for Adobe InDesign CS2 users), is provided as-is for your personal use. It has been widely tested and appears to function without error, but like all software, there may be gremlins lurking that have yet to surface.

You use this script entirely at your own risk. Any failure to perform as expected or any loss of data or any consequential damages are entirely your responsibility.

You'll also experience the productivity enhancement this script provides and benefit from not having to populate or repopulate your table the hard way. It's entirely up to you to weigh the benefits against the perceived risk.

You are advised to back-up your work frequently.

Included with the script is an Undo script that will revert your document to the state it was in prior to running PopTabFmClip. The Undo script also is subject to these terms.

How to Contact Us

We're on the web at: <http://www.pdsassoc.com/>

E-mail us at support@pdsassoc.com

PDS Associates
PO Box 127
Allenhurst, NJ 07711-0127
USA

Adobe and InDesign are trademarks or registered trademarks of Adobe Systems Incorporated in the United States and/or other countries. All other trademarks are the property of their respective owners. Copyright © 2004 PDS Associates. All rights reserved.

Publication Number: PDS2005-001-002P

Contents

What's New	1
Installing this Product	2
Agree to Terms & Conditions	3
Registration	3
Using the PopTabFmClip script	4
Step-by-Step Procedure	4
Operational Error Messages	4
Using the Undo Script	6
Troubleshooting	6
Support	8

PopTabFmClip

What's New?

February 20, 2007

After all this time, I thought that PopTabFmClip was bug-free, but a new user ran into a problem with vertically merged cells that completely blew me away. With the release of version 1.07 for InDesign CS2 and 1.06 for InDesign CS, the issues raised by this user have been resolved.

If you are new to PopTabFmClip, I advise reading the rest of the user guide and then coming back to this section. For experienced PopTabbers, here's what the problem was and how I've fixed it:

Issues Exposed

Three separate issues were at work simultaneously:

1. When the source table had vertically merged cells in it, PopTab took the contents of the last cell in the range and put it into the merged cell, but Excel puts that information into the first cell in the range, so vertically merged cells were arriving empty.
2. When InDesign converts a table with vertically merged cells to text, it does not preserve the cell structure of the original table (this was never an issue with copied spreadsheets from Excel because it ignores merged cells when it copies to the clipboard, treating each "non-existent" cell as an empty cell).
3. The user had some hard returns in some of the cells in the InDesign table so when PopTabFmClip tried to move the information from one table within InDesign to another, the returns caused the information to appear in the wrong cells.

The Resolution

I have made three changes to the way that PopTabFmClip operates:

1. When processing merged cells (vertical or horizontal), PopTabFmClip uses the information in the first of those cells in the source data not the last. This change should be beneficial to all users working with merged cells in either orientation.
2. When you use PopTabFmClip to copy the contents of all or part of a table within InDesign to another table (or part thereof), the copy of the source made by PopTabFmClip as the intermediate location for the data is unmerged before converting to text. This makes the format exactly compatible with that used by Excel, so the process works just as it does when importing data from an Excel clipboard.
3. Again, when you use PopTabFmClip to copy the contents of all or part of a table within InDesign to another table (or part thereof), any return characters within the source table are converted to forced line breaks. This keeps the data in the intended cells in the target table, albeit a slight change in formatting results. The choice here is to have the data sprinkled into the wrong parts of the table, so the trade-off makes sense. **Note:** this change does not apply to incoming Excel spreadsheets.

User Guide

Thank you for selecting PopTabFmClip for **repopulating tables from the clipboard**. This product is packaged to work with Adobe InDesign CS or Adobe InDesign CS2 on both Macintosh and Windows computers. It enables you to update values in your tables without affecting the formatting of rows and columns as well as retaining the formatting of the original text (provided that such formatting is set by a paragraph style—as it usually is).

Installing this Product

In the folder you downloaded, you will have found this PDF file, the *readMe* text file (please be sure to read it for late-breaking news) and two folders, one each for the InDesign CS version and the InDesign CS2 version. In both folders you'll find a library file named: *PopTabFmClip.indl*, and a script file named *PopTabFmClip.js* in the *PopTabFmClip for CS* folder and *PopTabFmClip.jsx* in the *PopTabFmClip for CS2* folder.

Store this PDF file and the ReadMe wherever you like. The script and library files must be moved or copied to your Scripts folder(s). These are located in the Presets folder in your InDesign application folder. If you have only a few scripts, you could put these files directly in your Scripts folder. If you have a large number of scripts, then you might create a folder named “Tables” inside your Scripts folder and put both files in it—like this (these screen shots are from an InDesign CS installation):



Figure 1a: Tables folder in Scripts folder (Macintosh)

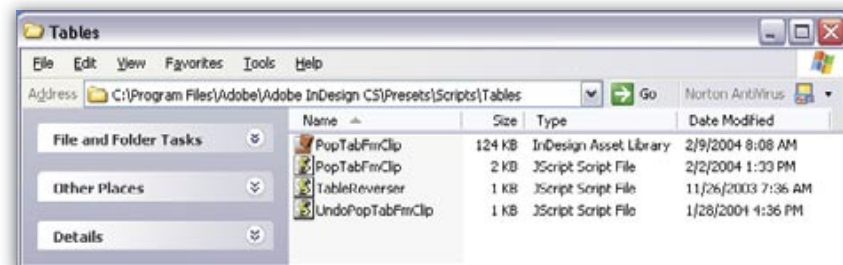


Figure 1b: Tables folder in Scripts folder (Windows)

As you can see, in this Tables folder, there is also a special purpose script which reverses the order of the rows in a table, as well as the undo script which is a token of appreciation for your purchasing a registration code for *PopTabFmClip*.

Notice that the library file, visible in the directory view of the files, does not appear in the Scripts palette (figure 2).



Figure 2: Tables scripts in Scripts palette — (l.) Windows, (r.) Macintosh

Agree to Terms & Conditions

Before you can make use of this script, it will ask that you agree to the terms and conditions listed on page ii of this User Guide.

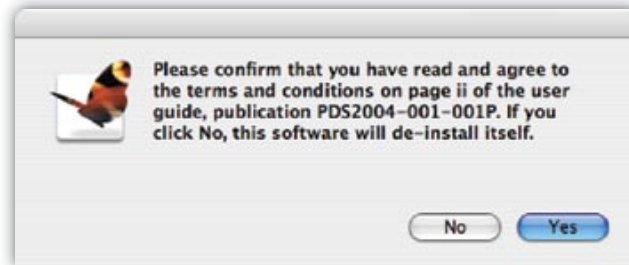


Figure 3a: Terms and Conditions Alert (Macintosh)

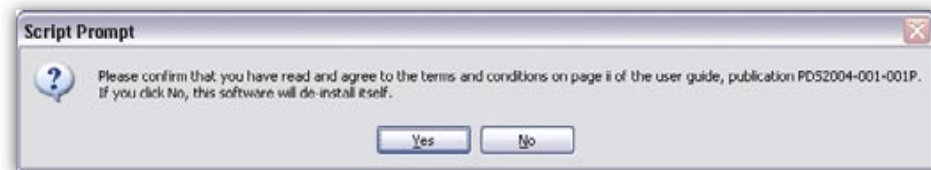


Figure 3b: Terms and Conditions Alert (Windows)

As the alert warns, should you decline to accept the terms, the script will immediately de-install itself. [Note that the version number you see may be different from Figure 3.]

Registration

This product is ShareWare. Until you register, it will behave as a demonstration, gently reminding you to obtain a registration code every now and then (the first time you use the script each day and every twentieth time after that). Aside from these minor interruptions, the script is fully operational in demonstration mode.

As a thank-you for registering your product, you will find an Undo script installed in the same folder as PopTabFmClip. This script can be used to undo the results of running PopTabFmClip; without the undo script, you will need to individually undo each step the script took on your behalf.

Also, as a registered user, you will receive priority support, and your input will have higher value as we make plans for future developments.

If you wish to delay registering, you can simply click Cancel in the registration prompt dialog. When you later decide you are ready to register, you can do so by simply running the PopTabFmClip script with no document open.

Using the PopTabFmClip script

Use this script to import new data into part or all of a formatted table, that is, when you need to repopulate a table with data from an external source.

The most common situation that arises is this: you receive a set of data in the form of a Microsoft Excel spreadsheet which you import into your InDesign document. You design your table, adding cell strokes and fills and formatting the text to your satisfaction. Everything looks exactly the way you want it, and then they drop a revised spreadsheet on you with up-to-date numbers.

Importing just the data is not easy without the help of a script. That's what *PopTabFmClip* is all about. Simply copy the range of corrected cells from the spreadsheet to the clipboard, switch to InDesign and click in the top left cell of the range of cells in your table, and then run the script.

Provided each cell you're repopulating is formatted with a single paragraph style (that's a single paragraph style per cell—each cell can be individually formatted however you wish), or it is uniformly locally styled, then the new data will assume the styling of the text it is replacing.

Step-by-Step Procedure

To use the *PopTabFmClip* script, follow these steps:

1. In the spreadsheet software, select the range of cells you want to transfer, and copy them to the clipboard. [**Note:** Microsoft Excel permits selection of discontinuous ranges. The script is not capable of detecting that you did this; it will update the information in contiguous cells.]
2. Switch to InDesign and click in the top left cell of the range you wish to update. Note that the script will work properly and perform precisely the same function whether you simply click an insertion point in the cell, select some text in the cell or select the whole cell.
3. Operate the script by double-clicking its name in the palette. Or, by using the keyboard shortcut you assigned to it via Edit/Keyboard Shortcuts.... [**Opinion:** This script doesn't warrant a shortcut because it is not likely to be needed frequently enough.]

Note: if you run this script with part (or the whole) of an InDesign table on the clipboard, it is converted to tabbed text and inserted into your target table starting at the cell you designate. The formatting of the cells being updated is preserved.

Operational Error Messages

If, after registering, you run the script with no document open, nothing happens.

If you forget to click in a cell in your table before running the script, you'll see this alert:

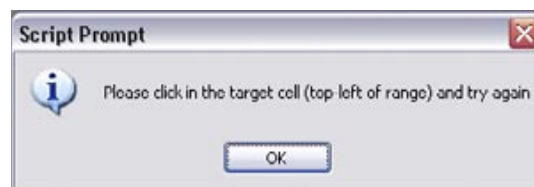


Figure 4a: Error message indicating unusable selection (Windows)

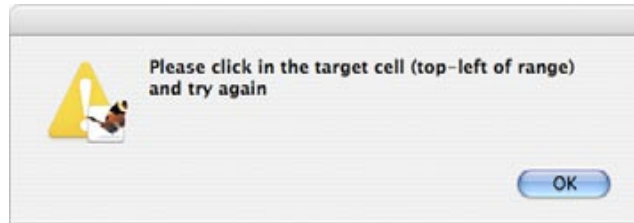


Figure 4b: Error message indicating unusable selection (Macintosh)

If the content of the clipboard is not text, you'll see this error message:



Figure 5a: Error message indicating clipboard is unusable (Windows)



Figure 5b: Error message indicating clipboard is unusable (Macintosh)

If either of these errors is reported, correct the situation and start over.

The next error message occurs if you select more data from the spreadsheet than can be accommodated in your table. The script alerts you with this message if the selection is too wide or too tall. The message is issued only once, even if you have exceeded your table's capacity in both width and height. If you click the No button, the script stops immediately; if you click the Yes button, the script continues, ignoring that data which does not fit:



Figure 6a: Error message indicating too much data on clipboard (Macintosh)

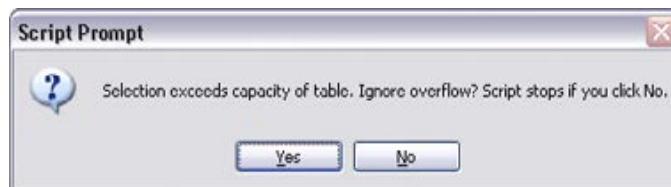


Figure 6b: Error message indicating too much data on clipboard (Windows)

For example, should you realize that you had clicked in the wrong cell before running the script, you can recover using the Undo script: *UndoPopTabFmClip*. This bonus script for registered users returns your document to the state it was in immediately before you triggered the script.

Using the Undo Script

When you run an InDesign script, it can perform a large number of operations on your behalf. Should you realize that you want to undo the effects of the script, you could if you wished step backwards through the actions of the script by repeatedly using the Undo command from the Edit menu. For a large script, this would get tedious, but it would eventually get you back to where you wanted to be. To save you this tedium, the *UndoPopTabFmClip* script is provided as a registration bonus. It will undo the effects of the *PopTabFmClip* script.

The *UndoPopTabFmClip* script is automatically installed when you enter your registration code. You may need to switch to a different application and then back to InDesign for it to appear in the Scripts palette. It is installed in the same folder as the *PopTabFmClip* script.

If you realize immediately that you want to undo the actions of the *PopTabFmClip* script, then just run the Undo script. If you perform some other actions, then you will need to undo them in order for the Undo script to run properly. If you're not sure how many steps you performed before realizing your need to undo, simply manually undo until a tiny overset text frame appears at the top left of the page that holds the cell in which you originally clicked. Once that frame appears, you will be able to run the *UndoPopTabFmClip* script.

Troubleshooting

Can't locate the Scripts palette

1. Look in the Window menu. When using InDesign CS2, there should be a menu item **Automation** immediately after **Attributes** and before **Color**, While InDesign CS has a menu item **Scripting** immediately after **Pathfinder** and before **Stroke**. The submenu lets you choose to display the Scripts palette and the Script Label palette. The first is essential for running scripts; the second is optional. Some scripts might require you to enter values using the Script Label palette. It's a good idea to group it with the Scripts palette if you're not sure just how much you need it.
2. If the **Scripting** item is not on the menu, use the **InDesign** menu to access the Configure Plug-ins dialog. There should be three items related to scripting: Script Label panel, Scripting, and Scripts panel. The first and third should be activated, the middle one should be locked. If they're there but in the wrong state, correct the state by clicking on the checkboxes. If they're missing, you probably need to reinstall InDesign.
3. If the plug-ins are there and in the right states, but still you don't see the palette or the menu item, try quitting InDesign and trashing your InDesign preferences. If, after relaunching InDesign, you still do not see the scripting features, then you probably need to reinstall InDesign.

Script fails to appear in the Scripts palette

1. Make sure that you installed it in the Scripts folder inside the Presets folder in the appropriate Adobe InDesign application folder. Newcomers to scripting sometimes put scripts in Plugins/Script instead. This is the wrong place. They belong in Presets/Scripts.

2. Make sure the script file is a plain text file saved with the ".js" extension for CS or the ".jsx" extension for CS2. That's how they were when you unpackaged. If necessary, unpackage the original download again and reinstall the script.

I attempted to run the script and got this error message:



Figure 6a: Error message indicating an essential library file is missing (Macintosh)

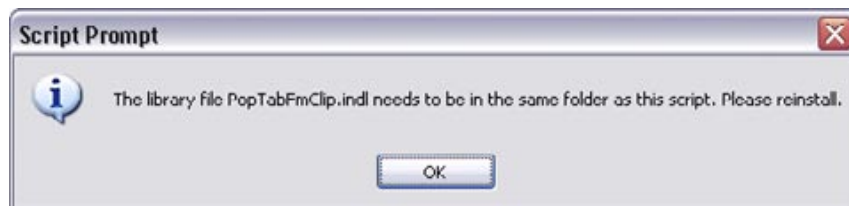


Figure 6b: Error message indicating an essential library file is missing (Windows)

1. If you get this message, it means that you have separated the script file from its library file in which it stores vital information. The installation instructions tell you to put the two into the same folder. To resolve this error, follow the installation instructions and move the two files (the script and its library) into the same folder in your Scripts folder.
2. There is a remote possibility that someone else running InDesign on a networked machine who has access to your computer has opened the library file across the network, thereby making it inaccessible to the script. This unlikely circumstance would also trigger this particular error message.

A power outage while the script was running has left a little red + at top left of my page

1. What you're seeing is a temporary text frame that is used to hold intermediate data while the script is running. If everything works as it should, that frame is automatically deleted by the script, but a power outage or a system crash could cause the script to not clean up behind itself. It is quite safe to simply delete that text frame, or you can run the UndoPopTabFmClip script to not only delete the frame but also undo any partial actions the script might have taken before the failure.

There was no power outage and no crash, but the little red + reappeared at top left

1. This will happen if you attempt to manually undo the effects of the script. You can use the red + to know whether or not to continue undoing. The first undo you perform after running the script causes the red + to appear. The UndoPopTabFmClip script can also be used to undo the effects of the script. You may run this script immediately afterwards, or after starting the manual undo process.

I purchased a registration code; how do I enter it?

1. Simply run the script with no document open. This will cause the registration dialog to be presented to you.

I entered my registration code but the promised Undo script is not in the palette.

1. InDesign updates the contents of the Scripts palette every time you switch into it from some other application. The Undo script is probably there, but until you switch out of InDesign and back into it, it will not be visible.
2. If you try this and still the script is not visible, that probably indicates that you do not have adequate permission for writing a file into the Scripts folder. In this case, please contact PDS Associates Support department by visiting the web site (see below). Remember to include your registration code with your request for assistance.

Support

If this document fails to provide the answer to your problem, please visit the support page of the PDS Associates web page, located at: <http://www.pdsassoc.com/>. Click the Support link in the navigation bar, if necessary.